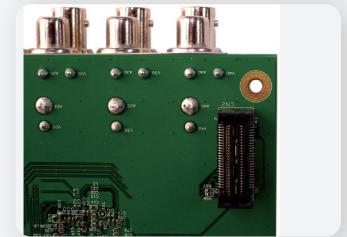
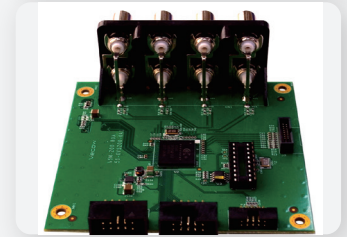
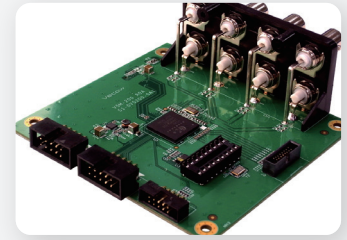
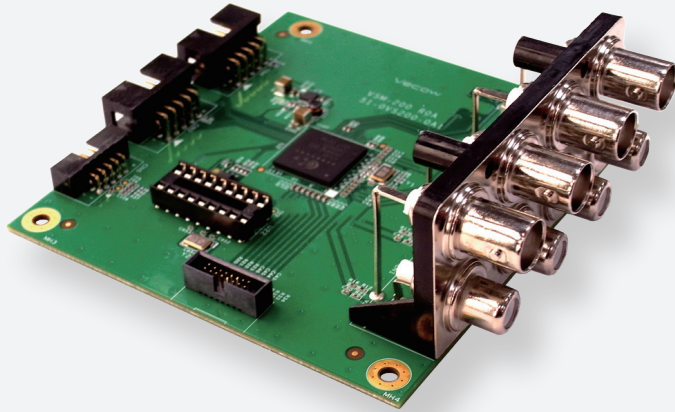


VSM-200

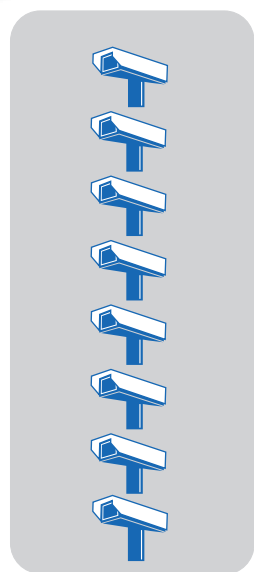
4-CH/8-CH, H.264, SUMIT (PCI Express), Software Compression/Video Capture card



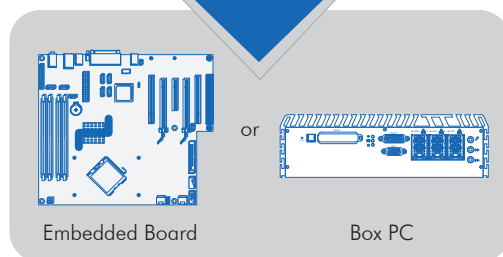
- 120/240 fps. in Real-time D1 Resolution
- 4-CH/8-CH Video/Audio Input
- High-quality 10-bit A/Ds for Video Decoders
- Interface to Maxim H.264 CODECs for Bridging of Compressed Data to PCIe
- Programmable Motion Detection
- Support GPIO

The Vecow VSM-200 multi-channel high quality video/audio card is especially designed for surveillance applications. Integrated with PCI Express interface, VSM-200 series provides outstanding digital to video transferring rate, intensive integration with wide-ranging systems, and flexibility for Build-to-Order. Containing eight high quality NTSC/PAL video decoders with 10-bit A/Ds and 5-line comb filtering, VSM-200 series produces high definition digital Video output. Digital Video/Audio output supports the bridging of up to four channels of digital video and audio from PCIe. In addition, low power consumption and low heat design of VSM-200 series can save more system power and use most PC system resources. The complete SDK supports and SUMIT form factor, the Vecow VSM-200 series can be easily integrated into various machine, such like as BOX Computer, Mounted PC, Panel PC, POS/ATM system or Embedded board.

Application

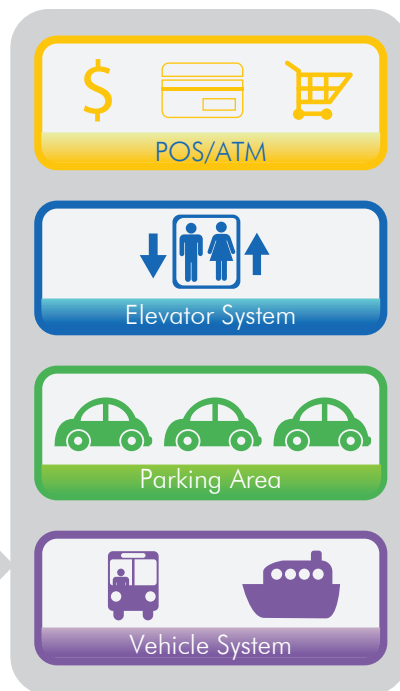


VSM-200



Embedded Board

Box PC



Specification

General

Bus Type/Form Factor
Dimensions (L x H)
I/O Connector

VSM-200-4

SUMIT (PCI Express)
90mm x 95mm (3.5" x 3.7")
4 x BNC, 4 x RCA on board

VSM-200-8

4 x BNC, 4 x RCA on board
1 x 16 pin header to D-Sub 15 cable
1 x D-Sub 15 to BNC/RCA cable

Environment Certifications
Storage Temperature
Operate Temperature

FCC, CE, RoHS compliance
-40°C to 85°C (-40°F to 185°F)
0°C to 60°C (32°F to 140°F)

Video

Maximun Channel Number
Input connector
Resolution

4
4 input BNC on board
D1 (NTSC:720x480 / PAL:720x576)
CIF (NTSC:360x240 / PAL:360x288)
4CIF (NTSC:704x480 / PAL:704x576)
DCIF (NTSC:528x320 / PAL:528x384)
QCIF (NTSC:180x120 / PAL:180x144)
4CH with full D1 resolution
120 fps on NTSC system, 100fps on PAL system

8
4 input BNC on board, 4 input BNC to D-Sub 15

Recording Rate

4CH with full D1 resolution
120 fps on NTSC system, 100fps on PAL system

8CH with full D1 resolution
240 fps on NTSC system, 200fps on PAL system

Audio

Maximun Channel Number
Input connector

4 mono or 2 stereo
4 input RCA on board

8 mono or 4 stereo
4 input RCA on board, 4 input RCA to D-Sub 15

Software

Windows
Linux
SDK

Windows XP / VISTA / Windows 7
Standard Linux kernel 2.6.32 and all above
VC++ / .NET

Recommand System

CPU
Memory
Graphics Unit
Storage Size

Intel Core2 Duo E4500 2.2GHz
1GB
DirectX 9.0c compatible display card
500GB

Intel Core2 Quad Q8400 2.66GHz
750GB

*The specification is subject to change without prior notice.

Ordering Information

Part Number

VSM-200-4
VSM-200-8

Description

4-CH, D1, Real-time, Mini-PCI Express, 120 fps, Video Capture Card, include cables and SDK
8-CH, D1, Real-time, Mini-PCI Express, 240 fps, Video Capture Card, include cables and SDK

Suggested Platform

EC-5500-5GDE

Description

Sandy Bridge 2nd Gen Intel® Core™ i7/i5 Fanless Embedded Controller with 5 GbE, 2 DDR3 SODIMM, 2 eSATA, 4x COM, 2 MiniPCI-e, 2 HDD, Isolated DIO, SUMIT (A, B), AMT 7.0